



**OSHIMA SHIPBUILDING CO., LTD.**

## **Latest Ships built in Japan**

---

**Bulk carrier/Handysize      FEDERAL OSHIMA**

**Bulk carrier/ore/coal      SHIN-SAKAIDE**

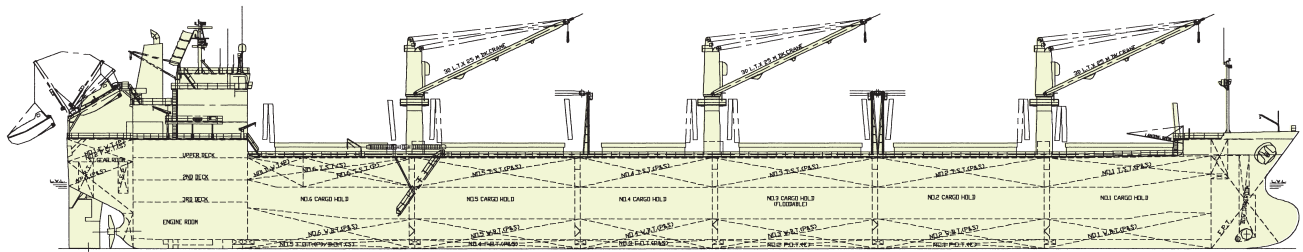
# BULK CARRIERS / HANDYSIZE

## FEDERAL OSHIMA 36,000-dwt Laker Type Bulk Carrier

The 36,000-dwt FEDERAL OSHIMA, the first vessel in a series of Oshima New Laker type Bulk Carriers was delivered in September 1999 to Federal Pacific Ltd. The vessel is designed and equipped to pass Saint Lawrence Canal which connects the Great Lakes and the Ocean. The design allows variety of cargoes to be handled, such as grain, ore, coal, ingots, hot coils and containers. The FEDERAL OSHIMA has a bulbous bow, a stern bulb, a semiskewed propeller to improve propulsion efficiency resulting in its excellent performance and lower fuel consumption. The vessel is equipped with three electrohydraulically driven deck cranes, each with a lifting capacity of 30 tons and grab handling facilities. The MAN B&W 6S46MC-C main engine offers superior reliability and fuel oil consumption as well as easy operation and maintenance.

### PRINCIPAL PARTICULARS

Length (o.a.) .....	199.99 m
Length (b.p.) .....	191.00 m
Breadth (mld.) .....	23.762 m
Depth (mld.) .....	14.85 m
Draft (mld.) .....	10.731 m
Gross tonnage .....	20,659
Deadweight .....	36,563 MT
Main engine .....	MAN B&W 6S46MC-C
MCR .....	10,710 PS x 129.0 rpm
NOR .....	9,105 PS x 122.2 rpm
Speed (max. trial) .....	15.34 knots
(service) .....	14.0 knots (15%)
Complement .....	27
Classification .....	DNV
Handling gear .....	Deck crane 30T x 25.0 mR x 3
Loading capacity (grain) .....	44,084 m <sup>3</sup>
(bale) .....	42,289 m <sup>3</sup>





Latest Ships Built in Japan

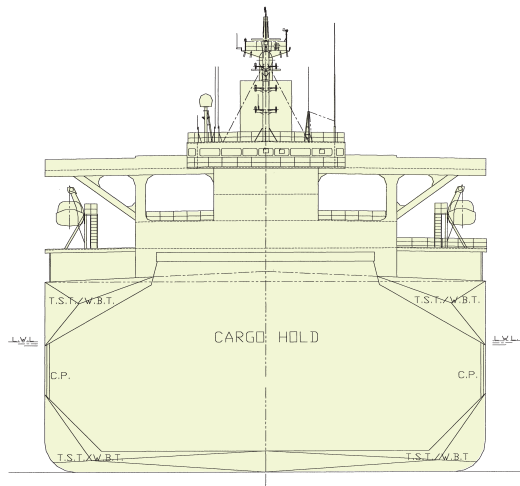
CONTENTS



# SHIN-SAKAIDE 90,000-dwt Coal Bulk Carrier

The 90,000-dwt SHIN-SAKAIDE, the first vessel in a series of Oshima New Coal Bulk Carriers, was delivered in January 2000 to Filberg Shipholding S.A. The vessel has large deadweight tonnage of 91,625 MT at shallow draft of 12.86 m and cargo volume of 110,413 m<sup>3</sup> among such coal carrier type bulk carriers. For effective cargo loading / unloading, the vessel has wide and long hatch openings,

wide inner bottom area and seven (7) cargo holds. The SHIN-SAKAIDE has a bulbous bow, a stern bulb, a semiskewed propeller to improve propulsion efficiency resulting excellent performance and lower fuel consumption. The MITSUBISHI 6UEC60LSII main engine offers superior reliability and fuel low oil consumption as well as easy operation and maintenance.



## PRINCIPAL PARTICULARS

Length (o.a.) .....	235.00 m
Length (b.p.) .....	226.00 m
Breadth (mld.) .....	43.00 m
Depth (mld.) .....	18.55 m
Draft (mld.) .....	12.86 m
Gross tonnage .....	50,238
Deadweight .....	91,625 MT
Main engine .....	MITSUBISHI 6UEC60LSII
MCR .....	16,200PS x 105.0 rpm
NOR .....	13,770 PS x 99.5 rpm
Speed (max. trial) .....	15.78 knots
(service) .....	14.3 knots (20%)
Complement .....	25
Classification .....	NK
Loading capacity (coal) .....	110,413 m <sup>3</sup>

